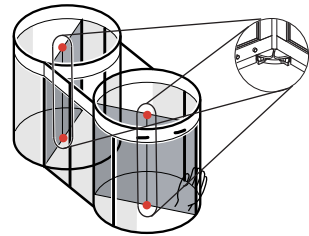


Locking devices

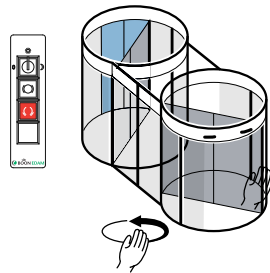
A. Doorset

1 Collapsible door set



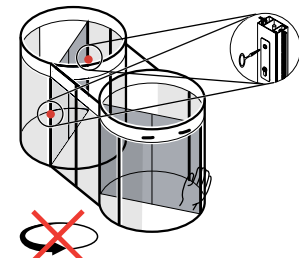
B. Night mode

1 Automatic Night sliding doors*

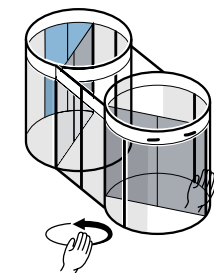


C. Off mode

1 Espagnolet lock*



2 Manual Night sliding doors*



Maintenance

- Daily :** Check the emergency- and safety devices and the general operation of the Twintour daily.
- Weekly :** Clean the anodised, powder coated and/or stainless steel surfaces with a wet cloth.
- Monthly :** Clean the anodised, powder coated and/or stainless steel surfaces with a wet cloth and a non-aggressive soap. Stainless steel surfaces need to be cleaned (INNO-X) according the instruction below (see Note!), Vacuum clean all the brushes.
- Yearly :** The Twintour needs a major maintenance check once a year. This has to be done by Boon Edam B.V. or your agent. This applies as well for repairs.

Caution !



Don't use water near the drive-units or control boxes.

Warning !



Switch OFF the power supply of the Twintour during maintenance or other work.

Note !

Cleaning the Stainless steel parts:
 - use a sponge to wipe the parts clean,
 - use a dry cloth to dry the parts,
 - apply an even spray on the surface to be treated or spray it on a clean, dry and soft cloth and apply. Rub off with a clean, dry and soft cloth.

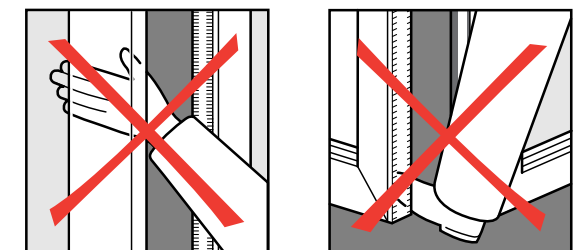
Dealer

For further information: consult the operating manual.

Explanation of the symbols

- | | | | |
|----------|------------------------------------|------------|---|
|
STOP | Door set stops |
Inside | Door set rotates manually |
| | Door set rotates on normal speed | | Door set rotates, for two segments, on normal speed |
| | Door set rotates on slow speed | | Door set rotates, for two segments, on slow speed |
| | Door set rotates into restposition | | No power supply |
| | Door set does not rotate | | Option |

Check the emergency- and safety devices and the general operation of the Twintour daily !

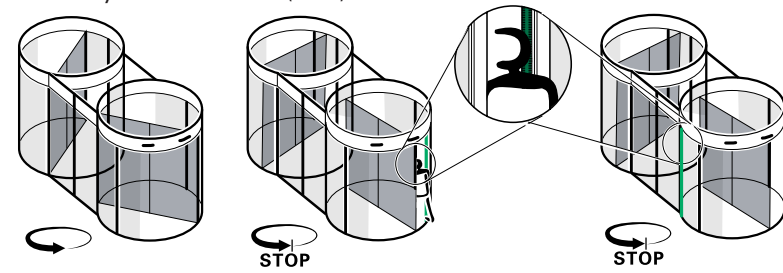


Safety- and Operating instructions

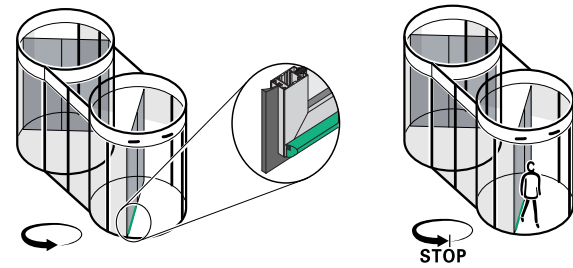
Control panel

A. The Twintour safety devices

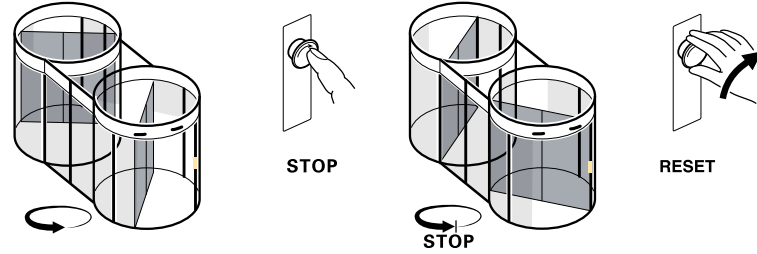
1 Safety Rail Bent wall (SRB)



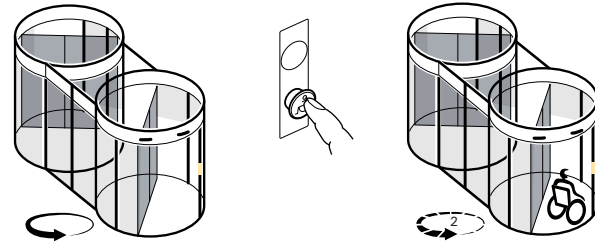
2 Safety Rail Door wing (SRD)



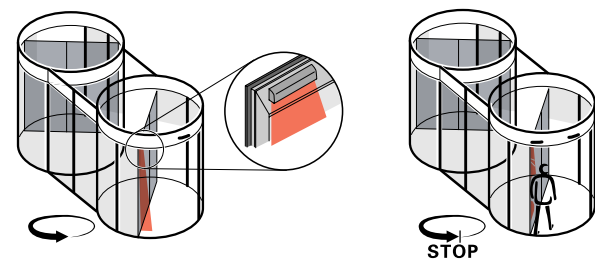
3 Emergency push button



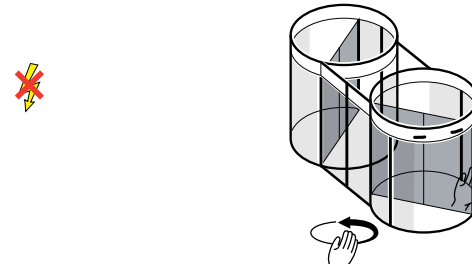
4 Disabled push button* (inside, outside)



5 Top Rail Sensor (TRS*)

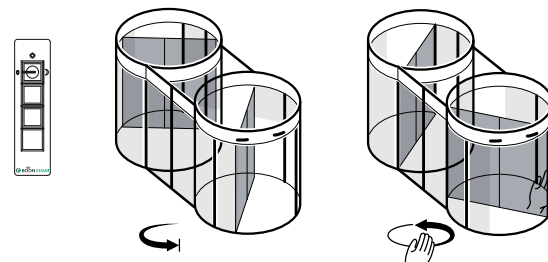


6 Failsafe

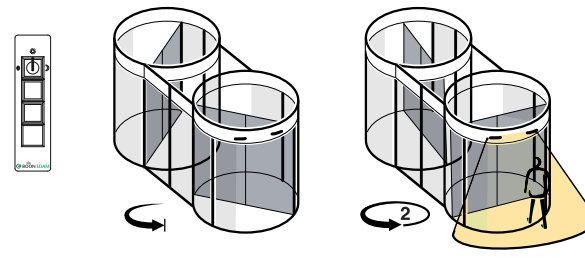


B. The working principles of the Twintour

1 Off mode



2 Day mode



3 Night mode*

